

THIS SELDOO



## OUR HOMES, YOUR HOLIDAYS

Design led stays in scenic locations.



# WELCOME

Thiseldo is a small collection of contemporary getaways in the UK, embedded in their scenic surroundings they calm the distractions of modern life enabling you to reconnect.

Nestled amongst lofty trees and scattered with sparkling light, Cabin Thiseldo is immersed in nature on the bank of Fritton Lake. Our contemporary and simple cabin offers a retreat in the heart of a pioneering rewilding project and private members holiday club. The perfect balance of luxury, action and seclusion.

Our beach chalet is clean and modern, it evolves over the day as it reflects the ever evolving beachscape metres away.

Each Thiseldo property was designed and built to stand the test of time by "The Hoxbys". Chelsie and Gary each have creative industry backgrounds, they are design-conscious characters with an eye for quality and detail. Their goal is to create small holiday homes to not only enjoy with their two young children, but to share with a wider community of likeminded people.

**PLEASE VISIT [WWW.THISELDO.COM](http://WWW.THISELDO.COM) TO LEARN MORE**

# FRITTON LAKE RETREATS

When at Fritton we enjoy quiet time in the cabin, bathing in the forest and soaking up the views of the sparkling lake from our decking. We like to indulge with a glass of wine in the hot tub; watching nature pass by.

During our stays we always take advantage of the clubhouse/Fritton Arms being so close, the chef makes delicious seasonal foods and tables can be booked at :

<https://www.frittonlake.co.uk/book-a-table/>.

When Grandad comes to stay he pops down to the fishing peg on the lake and tries his luck to catch something.

We rarely visit without taking part in the many activities offered; to find out what is happening during your stay please email [clubsports@frittonlake.co.uk](mailto:clubsports@frittonlake.co.uk) or visit the website <http://www.frittonlake.co.uk/all-activities/>

The floating sauna and heated pool are not to be missed either. If it's a chilly day our top tip is to light a fire by the pool before getting in (or ask a member of staff to), so you don't have to hurry away once you get out. Lastly, we often hire bikes and cycle to Gorleston Beach just ten minutes away.

As our cabin is brand new, we are still exploring and getting to know Norfolk. Please do contribute to our guest book and tell us and future guests what you get up to during your stay and share any recommendations. Please also tag us on instagram :

@Cabin\_ch50\_Frittonlake



## FRITTON LAKE

### **CONTACT INFORMATION:**

Phone: 01493 484 008

Email: [clubhouse@frittonlake.co.uk](mailto:clubhouse@frittonlake.co.uk)

### **EMERGENCY INFORMATION:**

Hospital:

James Paget Hospital  
Lowestoft Road, Gorleston-  
on-Sea, Great Yarmouth,  
NR31 6LA

Police:

Gorleston-on-Sea Police  
Station, 80 Suffield Road,  
NR31 7AL



# WIFI

## NETWORK

Sonnik FL-2

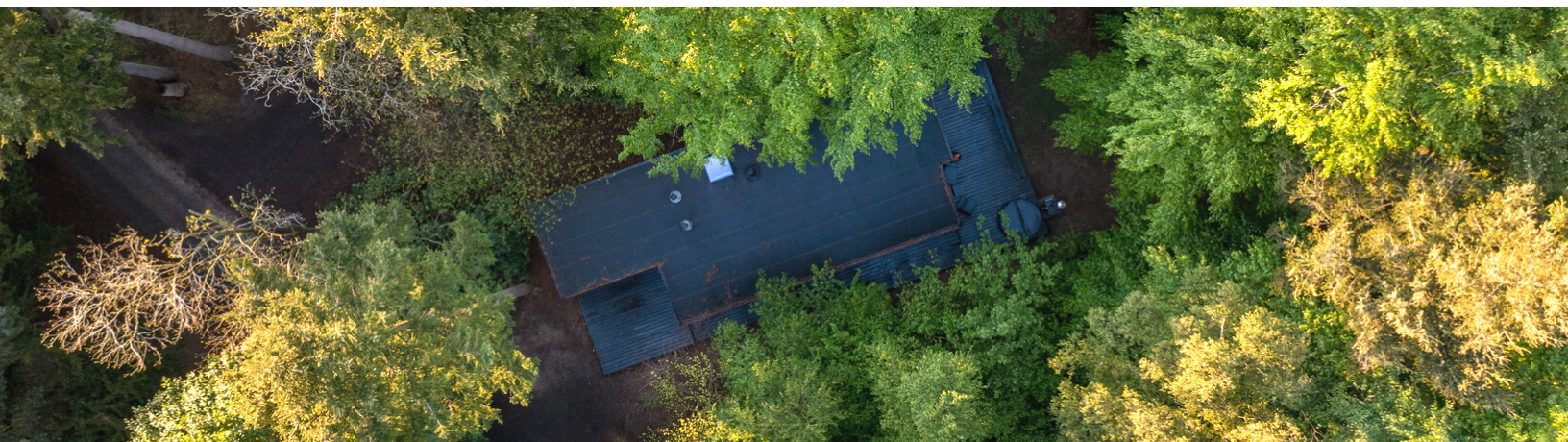
## PASSWORD

cabin50guest

# CHECK IN

**Check In Time: 4:00 PM**

Please collect the keys from the Clubhouse on arrival. If you would like the hot tub preparing in advance please contact [clubholidays@frittonlake.co.uk](mailto:clubholidays@frittonlake.co.uk) Alternatively you can buy a bag or two of firewood when checking in and ask for instructions.



# CHECK OUT

**Check Out Time: 10:00 AM**

We hope you enjoyed your time in our cabin. Please ensure you switch all appliances (including heated rails, underfloor heating and radiators) off when you leave the cabin and place rubbish and recycling in the large bins across the road from the cabin. Please remove all perishable food items. If the live plants are very dry please can you give them a drop of water if it's not too much trouble (some are faux plants).

Please leave the keys at reception and notify the staff of any breakages so that we can arrange prompt replacements for the next guests.

We hope you have a safe journey home.

# HOUSE RULES

01

## MANNERS

We would appreciate you not wearing shoes/boots indoors, and using the coasters and table mats to protect surfaces. Vacuum cleaner, mop and broom can all be found in the tall cupboard in the lounge. Please ensure the vacuum is charging after use.

02

## POWER

Please ensure you switch all appliances off when not in use and when you leave the cabin. We are trying to be mindful of our energy consumption.

03

## BREAKAGES

Please notify staff of any breakages so that we can arrange prompt replacements for the next guests.

04

## GUESTS

If you have guests joining you please sign them in with the Fritton team.

05

## EXTRAS

Underbed storage in the second double room can be used during your stay. Clothes airer and extra leaf for the table can be found under the sofa. Please place back there after use. Ironing board is under the master bed. **Please do not use paraffin based bbq briquettes, only charcoal is suitable for the ceramic bbq. Please do not use the firepit on the wooden decking.**

# EXPLORE



## Aldeburgh

Aldeburgh is a North Sea coastal English town in the county of Suffolk offering a variety of boutiques, shops and eateries.

## Gorleston-on-Sea

Gorleston-on-Sea is our nearest beach that lies just to the south of Great Yarmouth with its own huge bay and riverside and a stunning sandy beach stretching into the distance below cliff gardens and a grand promenade.

## Horning

Horning is a picturesque waterside broadland village, if you only visit one Broadland village, then Horning has to be that one.

## Horsey

Horsey Windpump is a National Trust property with tea rooms, round walk, nature reserve and gardens.

Horsey Gap is a gorgeous, sandy beach in a quiet village. The seals are on this beach all year round.





# EXPLORE

## Merryvale Model Village

Merryvale Model Village is an enchanting themepark offering a model village, garden railway, penny arcade & mini-golf course.

## North Norfolk

North Norfolk has 45 miles of stunning coastline, Blue Flag beaches, the unique Deep History Coast and breath-taking countryside. Further information can be found at <https://www.visitnorthnorfolk.com> we love Cromer and Holt but have much more to explore.

## Norwich

Norwich is a city in England's Norfolk County offering a variety of shops, eateries, historical sights including a cathedral and parks.

## Oxburgh Hall

Oxburgh Hall is a National Trust property with beautiful hall, gardens and estate.

## Southwold

Southwold is a charming seaside town on the Suffolk Heritage Coast. Southwold features both beach huts and a pier, as well as a unique cinema.





# EXPLORE

## Bewilderwood

An award-winning, forest full of family fun in Norfolk. The whole family can spend hours running, whizzing and clambering on the sustainable wooden play structures, from aerial ropewalks to climbing walls, balancing logs and muddled mazes in a beautiful forest setting.

## Somerleyton Hall and Gardens

12 acres of spectacular gardens for you to explore. A magnificent family day out.

## Norfolk Broads Boat Hire

There are many options but this is one we recommended

<https://www.broadstours.co.uk/broads-day-boat-hire/>

## Flint Vineyard

An innovative English vineyard.

## Pettitts Adventure Park

When exploring Norfolk with children this zoo and adventure park guarantees a fun day for all. .





# EXPLORE

## Africa Alive

With thousands of animals from around the world, set in over 100 acres of stunning Suffolk countryside, Africa Alive Zoological Reserve is the perfect place to connect with nature.

## Beccles

Close to the Suffolk-Norfolk border, Beccles is a charming market town made up of small squares and winding streets with plenty of independent shops and eateries. Plus there is a lido!

## Crabbing in Walberswick

Formerly the home of the British Crabbing Championships, Walberswick is a great place to go with the family. It's a fun and inexpensive day out with children.

## Covehithe Beach

The beach at Covehithe is a peaceful stretch of sand backed by the crumbling golden cliffs, a place to get away from it all.

## Fritton Owl Sanctuary

Meet a varied collection of owls with the option to hold one. There is also a flea market here with a eclectic mix of bric-a-brac.





## TAXI

Moolar's taxis are the closest to the cabin, they can be reached on 01493 781680.

## TRAIN

The nearest train station to Fritton Lake is Haddiscoe which is 2.5 hours from London Liverpool Street on the fastest train.

## BIKE RENTAL

You can hire Rayleigh hybrid 'Pioneer' bikes by the day from <http://www.somerleytoncycles.com/> including safety helmet, pannier, and and lock. They have small, medium and large frames.

## SUPERMARKETS

The nearest supermarkets are in Great Yarmouth including M&S Food, Sainsburys and Morrisons. There are a great selection of local butchers and independents nearby also, please enquire with Fritton staff.

# EAT

## FRITTON ARMS

Takes great pride in creating dishes which work with the seasons, using ingredients which have either been produced on the estate, or carefully sourced locally. Tel 01493 488 192 Email [clubhouse@frittonlake.co.uk](mailto:clubhouse@frittonlake.co.uk).

## SUFFIELD ARMS

The new pub associated with the team from The Gunton Arms.  
[www.suffieldarms.com](http://www.suffieldarms.com)

## THE GUNTON ARMS

Excellent food and beautiful grounds. Booking essential.  
[www.theguntontarms.co.uk](http://www.theguntontarms.co.uk)

## WINTERTON BEACH CAFE

Eat sustainable fair al fresco at the by an aware winning chef.

## THE INGHAM SWAN

Delicious food at an award winning restaurant, Sea Palling beach is also really nice.  
[www.theinghamswan.co.uk](http://www.theinghamswan.co.uk)



# BEFORE YOU GO

## HOT TUB

If you would like the log-burning hot tub prepared for your arrival (at an additional cost) please contact [clubholidays@frittonlake.co.uk](mailto:clubholidays@frittonlake.co.uk).

## FRITTON LAKE ACTIVITIES

Please contact visit <https://www.frittonlake.co.uk/all-activities/at-fritton/> or contact [clubsports@frittonlake.co.uk](mailto:clubsports@frittonlake.co.uk) to review and arrange the activities for your stay.

## TABLE RESERVATIONS

If you would like to book any tables ahead of arrival please visit <https://www.frittonlake.co.uk/book-a-table/>.

## BIKE RENTAL

You can hire Rayleigh hybrid 'Pioneer' bikes by the day from <http://www.somerleytoncycles.com/> including safety helmet, pannier, and and lock. They have small, medium and large frames.

## THE SMALL THINGS

It might be useful to pack a torch as it is very dark around the cabin after dark. Don't forget your streaming app logs (ie Netflix). Tea towels can hang on the inside of the under sink cupboard door.

# FRITTON LAKE MAPS



## "REALLY SPECIAL PLACE"

"We had a WONDERFUL weekend at Fritton Lake. Really special place to explore and relax. The floating sauna / lake dip was a highlight and the cabin is beautiful. Most relaxing weekend in a long time.

*Helen Mills*

## "NATURE AT IT'S BEST"

"Cabin Thiseldo is stunning with big windows giving access to fantastic views of the lake, deer and birds - nature at it's best and calmest."

*Norma Sixsmith*



# NATURE RESTORATION

From 2017 the Fritton/Somerleyton farmland has gradually been restored to self-management, leading to the protection and restoration of carefully managed sustainable wildland that is now home to free-roaming deer, cattle, water buffalo, sheep, ponies and rich bird and plant life. The conservation project is committed not just to the protection and restoration of wildland but in connecting people with nature and to motivate and inspire them to become part of our vision.

Fritton Lake contributes directly to the conservation work and guests are encouraged to join our re-wilding team to learn from and improve our natural ecosystem.



# ENJOY YOUR STAY

---

## CABIN THISELDO

COACH HOUSE 50 FRITTON LAKE,  
BECCLES ROAD, FRITTON,  
NORFOLK. NR31 9HA