

THIS SELDOO



OUR HOMES, YOUR HOLIDAYS

Design led stays in scenic locations.



WELCOME

Thiseldo is a small collection of contemporary getaways in the UK, embedded in their scenic surroundings they calm the distractions of modern life enabling you to reconnect.

Absorbing uninterrupted views of turquoise and glittering sand metres away, our chalet boasts an enviable sunset-soaking spot on Hayle's three mile beach. This sequestered chalet was built as a lens for ogling the shoreline and views towards Carbis Bay and St Ives whilst located suitably for all of your Cornish adventures.

Our beach chalet is clean and modern, it evolves over the day as it reflects the ever evolving beachscape metres away.

Each Thiseldo property was designed and built to stand the test of time by "The Hoxbys". Chelsie and Gary each have creative industry backgrounds, they are design-conscious characters with an eye for quality and detail. Their goal is to create small holiday homes to not only enjoy with their two young children, but to share with a wider community of likeminded people.

PLEASE VISIT WWW.THISELDO.COM TO LEARN MORE

RIVIERE TOWANS

When in Hayle we enjoy quiet time in the chalet, soaking up the views across the bay towards St Ives. During our stays we spend much of our time exploring (or relaxing on) the three mile sandy beach literally seconds away. The Cove Cafe above the beach has a good selection of Cornish ice creams, snacks and refreshments. Towards Gwithian and the Godrevy end of the beach not only can you spot seals, but you can also arrange surf lessons, Rockpool Cafe is worth the long stroll (or short drive) for lunch. We also like to walk down the estuary and nip into Lula, the lobster shack only ten minutes walk away.

We often pop into Hayle to pick up some Philps Cornish pasties (arguably the best in Cornwall!) and sit on the harbour wall catching crabs with our children. You can also arrange boat trips from Hayle too. Please feel free to store your surf/body boards under the chalet in the storage area.

West Cornwall is the perfect base for exploring the whole county from. We rarely visit without taking the coastal train from St Erth to St Ives; to visit art galleries, eateries and shops.

Please do contribute to our guest book and tell us and future guests what you get up to during your stay and share any recommendations. We do have a few suggestions to get you started over the next few pages.



**FOREVER
CORNWALL**
unique retreats

CONTACT INFORMATION:

Phone: 01326 567838

Email: info@forevercornwall.co.uk

EMERGENCY INFORMATION:

Hospital:

St Michael's Hospital

Trelissick Rd, Hayle TR27 4JA

Police:

Cornwall & Devon Police

South Terrace, Cambourne

TR14 8SY



WIFI

NETWORK

Sonnik C3-1

PASSWORD

Rtowans#C3

CHECK IN

Check In Time: 4:00 PM

Please collect a parking permit from the site team at Riviere Towans. Your keys can be found in the box on arrival. Please see the map you have been sent to help find the property.



CHECK OUT

Check Out Time: 10:00 AM

We hope you enjoyed your time in our chalet. Please ensure you switch all appliances off when you leave and place rubbish and recycling in the large bins behind the cabin remembering to remove perishable items.

Please leave the keys in the key box and notify Forever Cornwall of any breakages so that we can arrange prompt replacements for the next guests.

We hope you have a safe journey home.

HOUSE RULES

01

MANNERS

We would appreciate you not wearing shoes indoors, and using the coasters and table mats to protect surfaces. Vacuum cleaner, mop and broom can all be found in the tall cupboard in the lounge. Please ensure the vacuum is charging after use.

02

POWER

Please ensure you switch all appliances and heating off when not in use and when you leave the chalet. We are trying to be mindful of our energy consumption.

03

BREAKAGES

Please notify Forever Cornwall of any breakages so that we can arrange prompt replacements for the next guests.

04

BASEMENT ITEMS

The keys for the undercroft storage can be found on the hook in the chalet. You can also use the storage cupboards for storing surf/body boards. You will find the washing machine, deck chairs and a BBQ also here. **Please only use charcoal in the BBQ, not briquettes.**

05

EXTRAS

Underbed storage in the bedrooms can be used during your stay. Clothes airer and extra leaf for extending the table (to seat 6 people) can be found under the sofa. Ironing board is in the living room cupboard. Please return all after use.



EXPLORE

St Michael's Mount

National Trust historic castle, gardens and island community off the coast of Marazion. It is accessed via a causeway from the beach, when the tide is in there is no access by foot. Booking essential.

Tingtagel Castle

The ruins of King Arthur's castle, now a National Trust location with super dramatic scenery. Merlin's caves on the beach can only be accessed when the tide is out. Booking online required.

Mousehole

A picturesque fishing village and port only 30 mins away. You can take boat trips from the harbour and can arrange picnics to take along (details below). Small selection of excellent eateries.

Charlestown

Where Poldark is filmed, an unspoilt, original Grade II Listed 18th century harbour with maritime museums. There are tall boats and even some pirates!



EXPLORE



Mevagissay

A small fishing village and port not far from the Eden Project. Narrow streets with decent ice cream parlour and fish and chips.

Port Isaac

Where the Fisherman's Friends (male sea shanty choir) originate and where Doc Martin is filmed. The Fisherman's Friends perform the last Friday of each month on the harbour wall for charity. It's a pretty little harbour town with a few eating spots



Minack Open Air Theatre

Awe inspiring theatre carved into the cliff face with the ocean as the back drop. Check their program online, you can visit the grounds and gardens outside of showtimes.

St Ives

Array of nice shops and restaurants. It can get very busy and parking can be an issue so we suggest you catch the coastal train (park and ride from St Erth). The Tate and Barbra Hepworth Museum are great for your culture fix. Tarquin's Gin Distillery offers daily tastings, bookings essential.



EXPLORE

Porthleven

A harbour, beach and foodie destination in West Cornwall, there's a Rick Stein eaterie, a fab old pub called the Ship Inn and apparently the Kota Kai offers yummy Thai food, we are yet to visit.

Port Isaac

Where the Fisherman's Friends (male sea shanty choir) originate and where Doc Martin is filmed. The Fisherman's Friends perform the last Friday of each month on the harbour wall for charity. It's a pretty little harbour town with a few eating spots

Padstow & Rock

Beautiful harbour village with great food. Should be called "Padstein" being the base for many of Rick's eateries. Rock on the other side of the cove offers a beach stroll and a few cafes.

Jubilee Pool

The UK's first (newly opened) geothermal lido in Penzance, booking essential. It is part of the old art deco lido which only is a few degrees warmer than the sea. Cafe onsite.

Penzance has some interesting bric-a-brac shops, boutiques and delis.

EXPLORE



Lost Gardens of Heligan

30 ago, Heligan's historic gardens were unknown and unseen; lost to the brambles of time since the outbreak of WW1. It was only the chance discovery of a door in the ruins that led to the restoration of this once great estate. Today, The Lost Gardens have been put back where they belong: in pride of place among the finest gardens in England.

Eden Project

Eco visitor attraction famous for its Biomes, the world's largest greenhouses which nestle in a giant 50 metre deep crater forming the centrepiece of a spectacular global garden

Boat Trips

Cormorant Cruising from Mousehole is meant to be great, and you can order ahead picnics from the Four Teas Café to take with you.

Coast Boat Trips - is a new business run by a young couple who also own/live in a chalet at Riviere Towans. They look fab and go from Hayle and Penzance.

Animal Sanctuaries and Zoos

The Seal Sanctuary near St Austell is meant to be really fun as is The Monkey Sanctuary also. Paradise Park is a zoo and theme park.





KYNANCE COVE

My favourite beach, offering breathtaking views of white sand and turquoise sea. When the tide is out interesting rock formations, coves and caves are revealed, but you really need to check the tide before going as you can't access if the tide is in. It is very steep so save energy for getting back up to your car. There's a nice family run beach café.

SENNEN

This large sandy beach offers a wide range of activities, we haven't spent any time here although it comes highly recommended.

PORTHCURNO

A small and very pretty Cove near the Minnack Theatre. It is the cove you see in the TV series Poldark. There are cafes a 5-10 minute walk from the beach.

PRAA SANDS

This beach comes highly recommended for families.



TAXI

Hayle taxis are the closest to the chalet, they can be reached on 01736 756565.

COASTAL TRAIN

The nearest train station to Riviere Towans is in Hayle but also nearby are St Erth and Lelant Stations, each of which offers a wonderful coastal train ride into St Ives (meaning you can avoid hunting for a parking space).

SURF & BOAT RENTAL

There are a variety of surf shops and schools locally, you can hire boards whether they be for surfing, bodyboarding or paddleboarding. There are also options for boat trips, sea kayaking and more.

SUPERMARKETS

The nearest supermarkets are in Hayle including M&S Food, Lidl and Asda. There are a great selection of local grocers and independents nearby. Coop is the onsite shop just facing the Haven Holidays site.

EAT

BIRDIES BISTRO

Sitting on the Hayle estuary, Birdies is our top spot for brunch. They do offer lunch and dinner also. A mix of al fresco and inside seating.

COVE CAFE

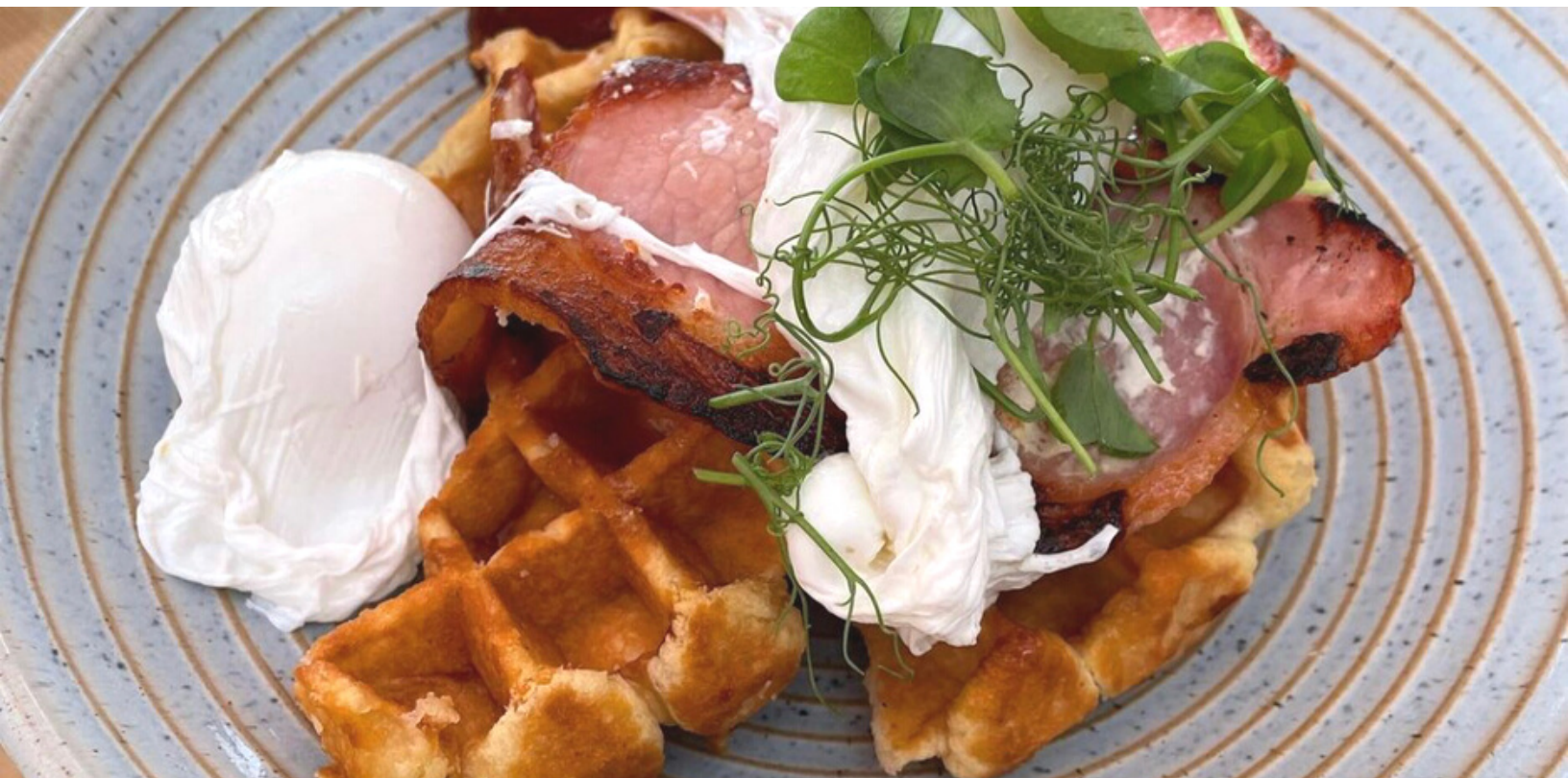
On Hayle beach this cafe reopened in 2021 with a new menu and approach. Good selection of ice cream, snacks and refreshments.

THE ROCKPOOL

Café come restaurant in Gwithian, it's about 3 miles so walkable or can drive in 10 mins. You can often see seals around the lighthouse and it's an area of outstanding beauty, the café is decent too.

THE BLUFF INN

Very basic pub with large arcade area inside, and a children's playground. The view from the garden terrace is great and the proximity to the chalet/beach are very handy. The food and drinks are however fairly uninspiring.



EAT

PORTHMEOR CAFE

Next to the Tate this eaterie has a buzzing atmosphere, alfresco dining and imaginative cocktails. They serve breakfast, lunch and tapas through to evening dining.

PORTHMINSTER CAFE

Located right on the beach in St Ives, this is a multi-award-winning seafood restaurant. The atmosphere is relaxed and friendly. We recommend the sea food platter for a treat of special occasion!

THE OLD COASTGUARD

Located in Mousehole, they have built the reputation of their kitchens on the maxim that the best things in life are kept simple. Beautiful dishes using local and seasonal ingredients.

CARBIS BAY

Carbis Bay Estate is a luxurious coastal retreat with a privately owned 25-acre Blue Flag beach, impeccable service, fine food, superb spa facilities and breathtaking views across this beautiful bay.



EAT

FITZROY

Cool and interesting restaurant in Fowey offering a special menu with plenty of seafood. The food is exceptional.

TOLCARN INN

An old maritime inn in the harbour wall in Newlyn. Boasts an excellent chef offering superb seafood dishes.

S. JELBERTS ICE CREAM

Old fashioned and simple ice cream from Jelberts in Newlyn, no frills! It's like stepping back in time and described as a Cornish institution...get a dollop of clotted cream on top for extra indulgence!

45 QUEENS STREET

Trendy cocktail bar in a stylish old warehouse in Penzance, family run and they sometimes offer light food also.



EAT

THE GODOLFIN

Stylish gastropub overlooking St Michaels Mount, if you time your visit well you can sit in the window and watch the causeway to the castle reveal itself or get washed away under the tide.

TREVASKIS FARM

A pick your own fruit farm, with a small collection of farm animals to pet. They apparently do an exceptional roast on Sundays, which we are yet to sample.

MR B'S

A large ice cream parlour offering a huge range of daily flavours, vegan options available, plus dog icecream! Expect to queue!

FEED

A take-away café take away in Hayle, their food is excellent and coffee also. Awarded one of the best new cafes in Cornwall in 2021 - they also do a supper club.



BEFORE YOU GO

PARKING

There is a parking space designated for the chalet, after you pass the Bluff Inn you will see the sign on the right. However directly behind the chalet which is much closer if you can find a space. Please pop to the site Reception to collect a parking voucher.

BOOK AHEAD

Cornwall is incredibly busy during the holiday season and it is advisable to book all attractions and days out in advance to avoid disappointment.

TABLE RESERVATIONS

We also recommend you also book tables for eating out well in advance of your trip. Some cafes will have space for walk-ins but most restaurants and pubs will be fully booked.

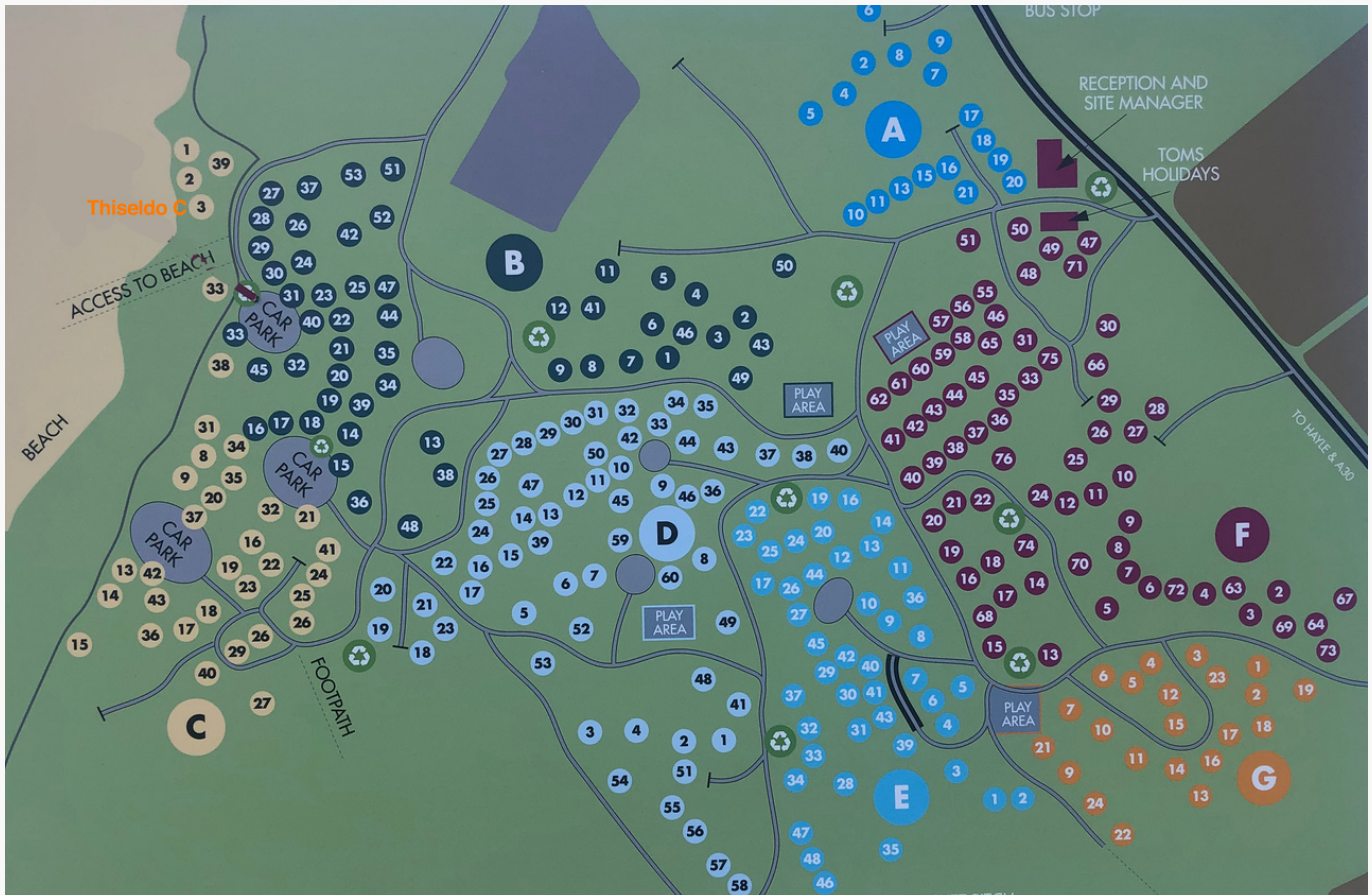
NO SMOKING, NO DOGS

Blood, sweat and tears have gone into the renovation of our chalet and so we hope you respect our house rules and requests.

THE SMALL THINGS

It might be useful to pack a torch as it is very dark around the chalet and park after dark. Don't forget your streaming app logs (ie Netflix). Tea towels can hang on the inside of the under sink cupboard door. Please only charcoal in the BBQ: **do not use briquettes.**

RIVIERE TOWANS MAP



DIRECTIONS

Follow the A30 all the way to the big Loggans Moor roundabout at Hayle. Take the third exit "Hayle", and straight over the next double-mini-roundabout. Soon you'll pass playing fields on your right – opposite the Texaco garage turn right signed "The Towans" and "Beaches". Go through Phillack village and keep following the road for about half a mile. You'll see Riviere Towans / Toms Holidays – if it's 9-5 stop off here to get a car parking pass for chalet C3 Thiseldo, see note below. Then continue on the road past the Mini Market, bear left, go past the back of "The Bluff Inn". Now keep following the road down and right. Look for the second car parking area. In the corner are the steps to the beach – and to the right of this are the steps to chalet C3, Thiseldo.

You need a parking pass which is available from the Riviere Towans office. They are open 9-5 Monday to Saturday and 9-1 on Sundays. If you arrive out of hours please get a pass first thing the next morning. The pass must be displayed in your car.

"TESTIMONIALS REQUIRED"

"You are one of the very first people to stay in our cabin, it would be great to hear what you think so we can share with future guests.."

Name of guest

"TESTIMONIALS REQUIRED"

"You are one of the very first people to stay in our cabin, it would be great to hear what you think so we can share with future guests.."

Name of guest



BEACH CLEAN UPS

As you're no doubt aware, there are various organisations and charities that run community events to help protect the wildlife, save the oceans and keep the beaches clean for all. We have joined Surfers Against Sewage on Hayle Beach in the past doing a sterling job at looking after this special place. We never leave any rubbish on the beach and would hope all guests do the same. In fact most days we spend on the beach end with our family collecting rubbish and popping it in the bins as we leave.

REMEMBER - BE SAFE AND CONSIDER OTHERS ON THE BEACH AND WHEN YOU LEAVE TAKE WITH YOU EVERYTHING BUT YOUR FOOTPRINTS.

BEACH SAFETY

Take care and stay safe on the beach.

ALWAYS

Read information notices.

Swim between the red and yellow flags on patrolled beaches.

Leave the water if you feel tired or unwell.

Look after yourself in the sun.

NEVER

Swim alone.

Swim until at least one hour after eating.

Swim after drinking alcohol.

Swim when a red flag is flying.

Leave children unsupervised.

Snorkel unless you are a good swimmer.

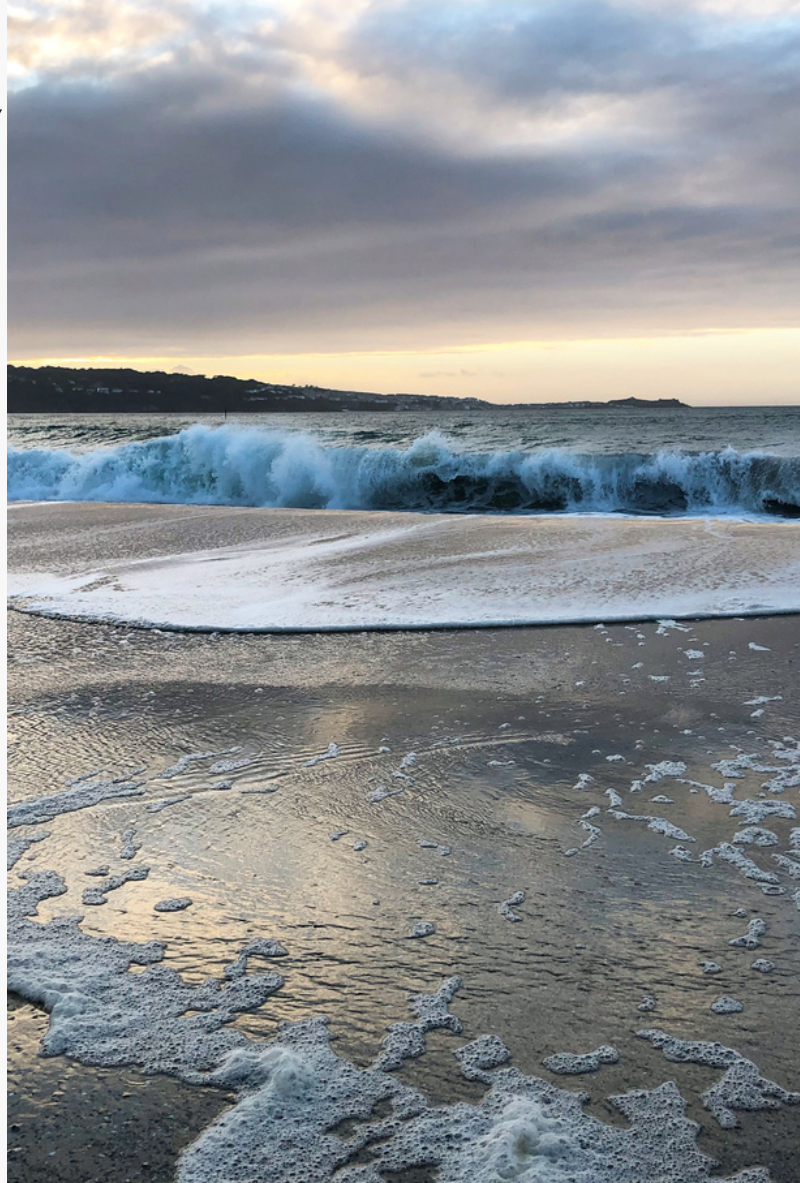
Put yourself in danger of being cut off by the tide.

Sit under cliffs.

Play or climb on cliffs.

Go near cliff edges.

Use inflatables in the sea.



IF YOU GET INTO DIFFICULTIES IN THE SEA

Remain calm.

Do not tire yourself.

Attract attention by shouting for help and waving one arm.

Swim diagonally across the current.

IF YOU SEE SOMEONE IN DIFFICULTIES IN THE SEA

Contact a Lifeguard or dial 999 and ask for the Coastguard.

Follow any instructions given by a Lifeguard or the Coastguard.

Use any available rescue equipment.

Only enter the water if you are a good swimmer and are confident you will not put yourself in danger.



ENJOY YOUR STAY

CHALET THISELDO

C3 RIVIERE TOWANS,
PHILLACK, HAYLE,
CORNWALL TR27 5AF